

CORRECTION → Butée réglable

Classes d'équivalence cinématique

- I : 1; 2; 3; 4; 5 p
- II : 6 p
- III : 7 p
- IV : 8 p
- V : 9 p

Graphe des liaisons

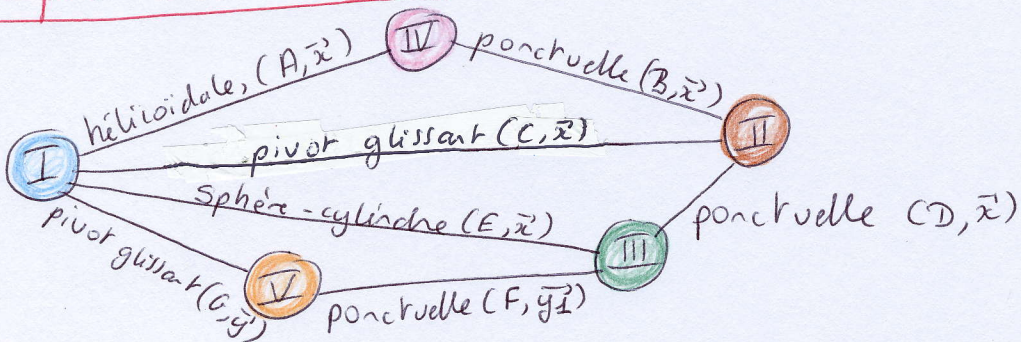
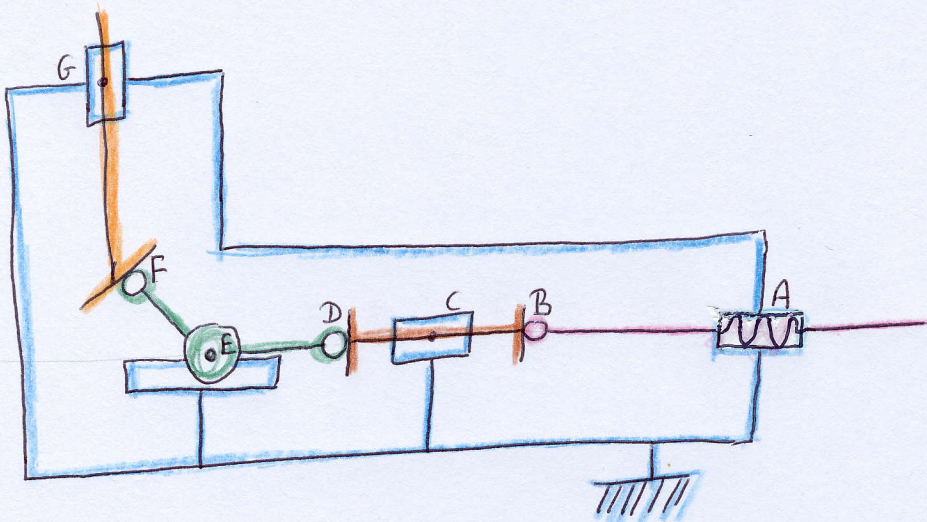
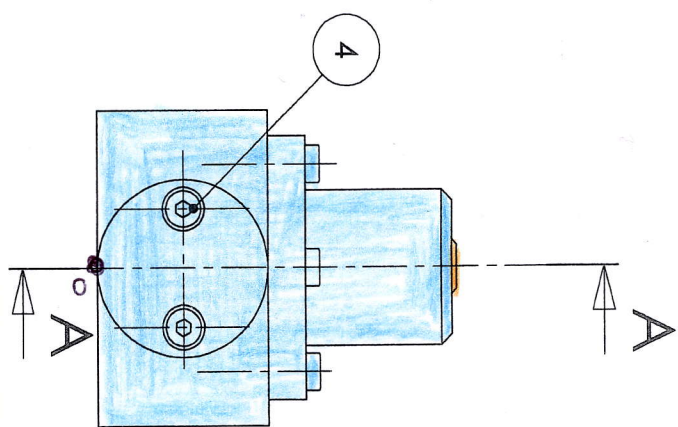
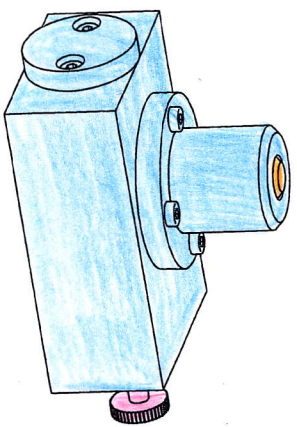
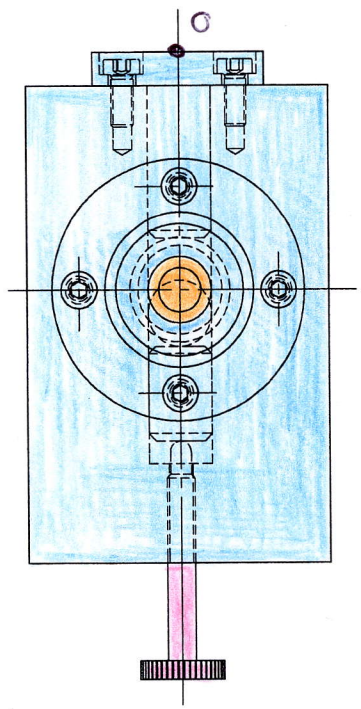
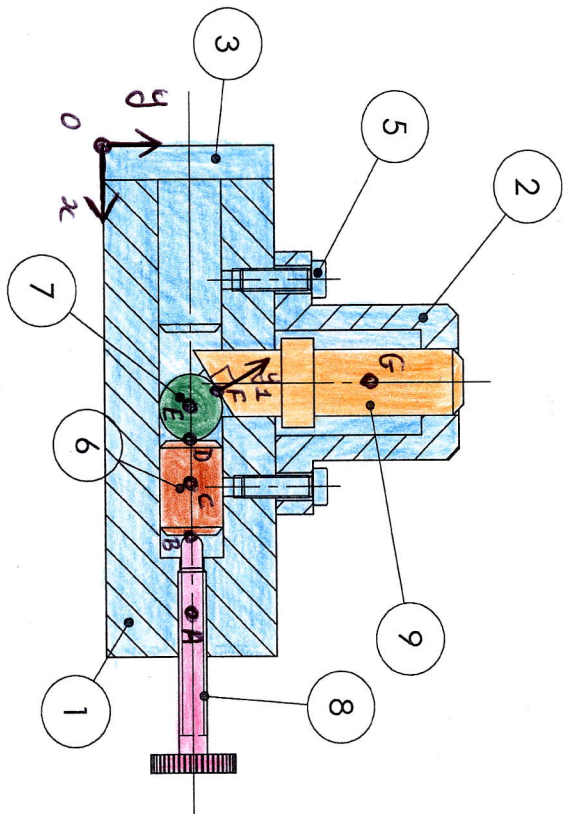


Schéma cinématique dans le plan (O, x, y)



A-A

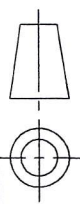


| Repère | Désignation | Nombre |
|--------|------------------|--------|
| 1 | Corps | 1 |
| 2 | Guide | 1 |
| 3 | Butée | 1 |
| 4 | TCHC M6_14 | 2 |
| 5 | TCHC M6_20 | 4 |
| 6 | Piston | 1 |
| 7 | Bille | 1 |
| 8 | Vis de manoeuvre | 1 |
| 9 | Chandelle | 1 |

Butée réglable

Lycée Jules Ferry - Versailles

Ech.: 1 : 2



A4