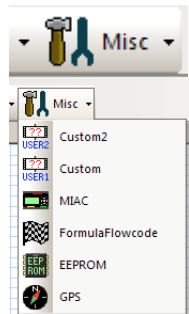


Run the soft ware

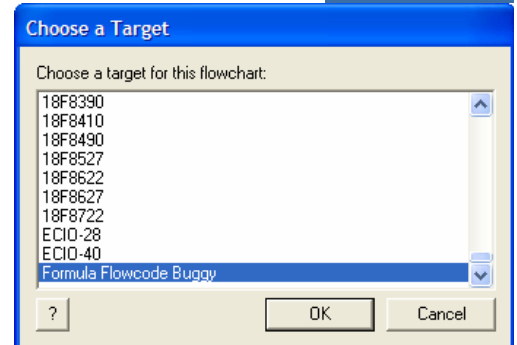
Run Flowcode V4 by double clicking on this icon.



Select "Create a new Flowcode flowchart..." on the opening screen and click "OK".



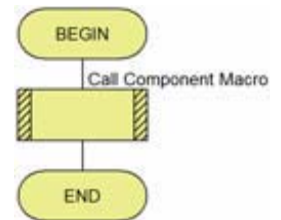
Select the "Formula Flowcode Buggy" as the target device and click "OK" (see screenshot above).



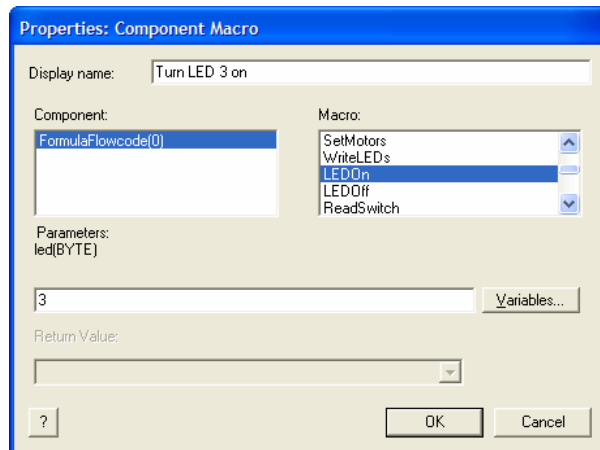
Click the "Formula Flowcode" component icon:

Turning a LED on

Drag the "Component Macro" icon onto the flowchart between the "Start" and "Stop" icons.

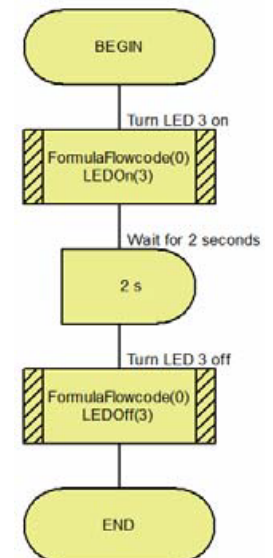


Your program will now look like this:



The window on the right will be displayed. Select the "FormulaFlowcode(0)" component, then the "LEDOn" macro. Type "3" into the "parameters" box. Also add an appropriate comment into the "Display name" box. Once you have finished, click the "OK" button.

Next, drag a "Delay" icon onto the flowchart immediately below the previous icon. Double-click this delay icon and select 2 seconds as the delay



time. Also, add an appropriate "Display name" and then click "OK". Finally, add another "Component Macro" icon to the end of your flowchart. Edit its properties so that LED 3 is turned off (using the "LEDOff" macro). Your finished program should look similar to that on the right.

Save your program (File...Save), giving it an appropriate name.

Simulate the program by clicking the "Run" button. You should see LED 3 on the Formula Flowcode window light for a few seconds.