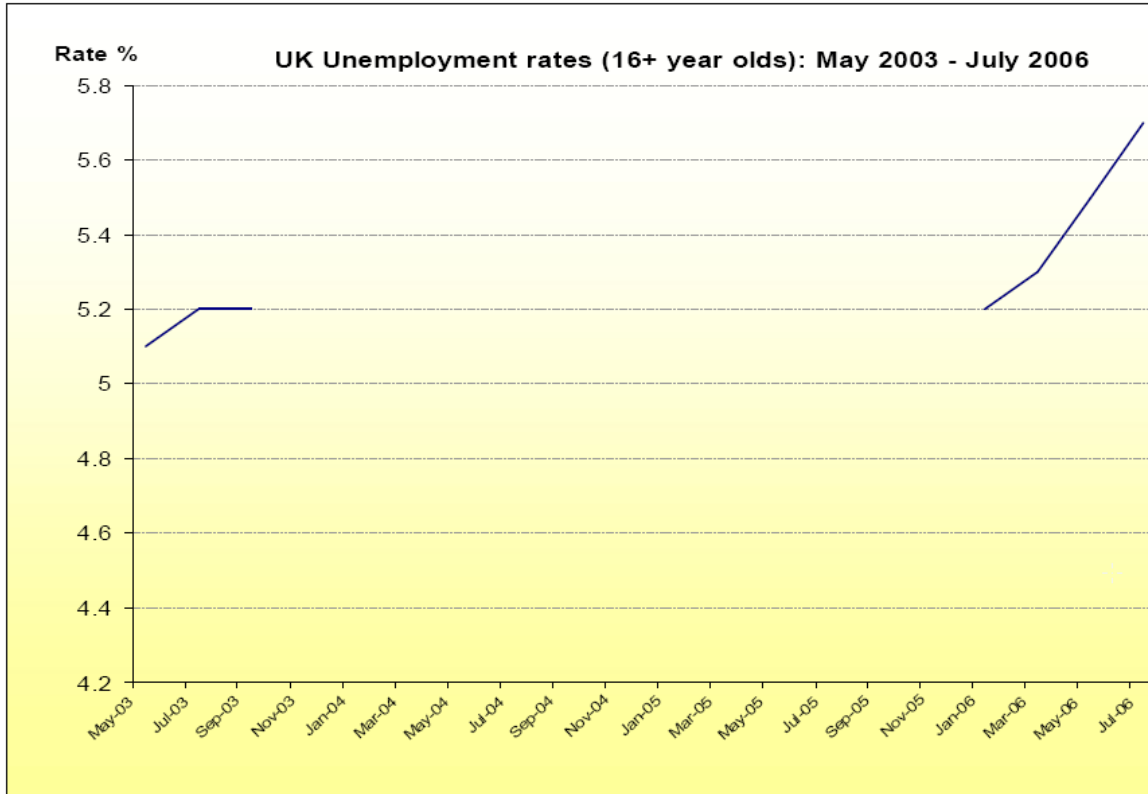


Analyzing a graph



1 What kind of chart is this?

- a) A pie chart
- b) A line graph
- c) A proportional bar chart

2 What does the chart show?

- a) The percentage of the workforce over 16 who were unemployed
- b) The percentage of the workforce over 16 who are unemployed
- c) The number of people over 16 who were unemployed

3 What are the units shown in the vertical axis (going up)?

- a) Hundreds
- b) Thousands
- c) Percentages

4 What period does the chart cover?

- a) Just over 3 years
- b) Almost 3 years
- c) Just over 2 years

5 What was the unemployment rate at the beginning of the period?

- a) 5 per cent
- b) 5.1 per cent
- c) 5.2 per cent

Description of the chart

Now read the description of the chart and draw the missing section of the line graph.

The line graph shows figures for unemployment in the UK workforce between May 2003 and July 2006. It is clear from the chart that the rate of unemployment **fluctuated a great deal** during this time.

At the beginning of the period, unemployment stood at 5.1 per cent. A few months later the figure **had risen slightly** to 5.2 per cent. Unemployment then **remained stable** until September 2003.

From this point on **there was a steady downward trend** and by January 2004 the rate **had fallen to** 4.9 per cent. It **stayed at this level** until May the same year, but from May to July **there was another small drop** of 1 per cent. There were no further changes in the level of unemployment until March the following year.

From March to May 2005, **there was a small increase** of 1 per cent, but this did not last long and the figure had fallen back to 4.8 per cent by July.

From September 2005 onwards, however, **there was a marked upward trend** in the rate of unemployment in the UK.

From September 2005 to November the same year, **the figure shot up** from 4.8 to 5.2 per cent. The rate remained stable for a few months, but then **rose sharply** again, and had **reached a peak** of 5.7 per cent by July 2006.

Find sentences from the text

The highlighted words in the description of the chart that you've just read are useful phrases for describing increases and decreases. Read the report again and find phrases from the text which mean ...

- Went up and down frequently
- Did not change (2 phrases)
- Went up a little
- Went up very quickly (2 phrases)
- Arrived at its highest point
- Went up noticeably over a period
- Went down (2 phrases)
- Went down gradually over a period

