

Name of the graphs and charts

What are these visuals called in English? Match the numbers to the descriptions.

bar chart

table

technical drawing

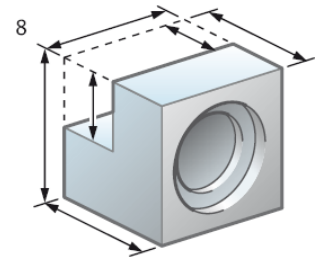
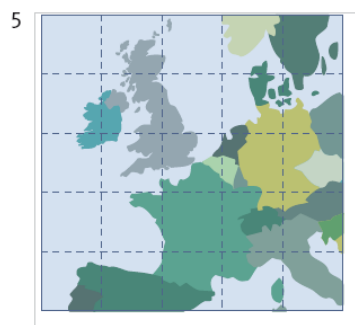
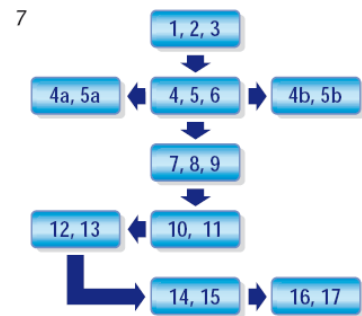
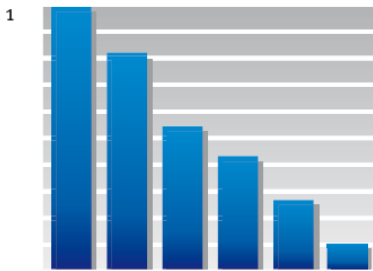
flow chart

map

(line) graph

pie chart

organizational chart/organigram



3

	A	B	C	D
1				
2				
3				
4				
5				
6				
7				
8				
9				
10				
11				
12				



Which of these visuals would you use to describe:

- Your company's market share?
- The steps to be followed from order placement to delivery of a product?
- Your company's new organizational structure?

Describing trends


Trends are changes or movements. These changes are normally expressed in numeric items, for example, population, production volumes, sales, prices, ...


There are three basic trends: upward movement, downward movement, no movement.

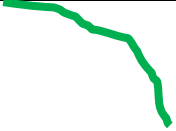
Describing graphs

Complete the tables with the words below:

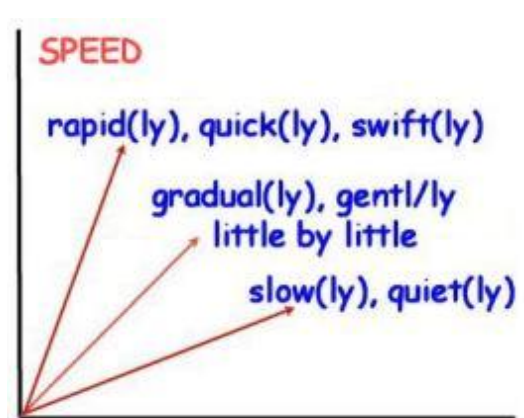
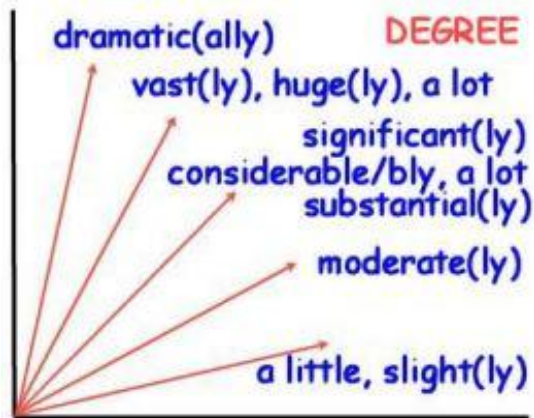
considerably, decreased, dropped, gradually, growth, increase, increased, moderately, sharp, slowly, steep, went up.

	The temperature	Rose	Slightly.

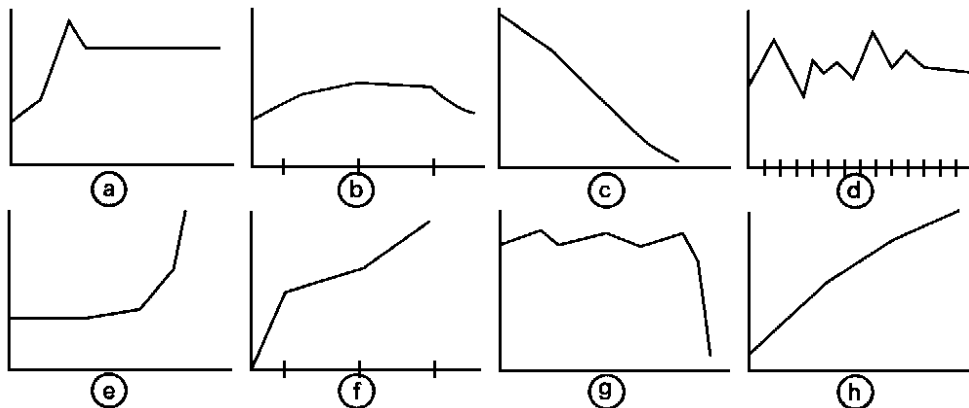
	There was a	dramatic	rise	In solar energy production.

	Rice production	fell	significantly

Indicating the type of change



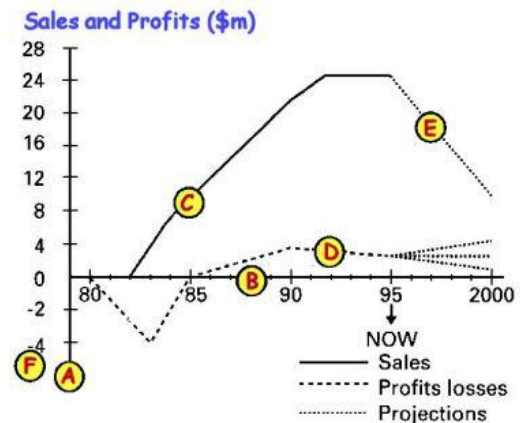
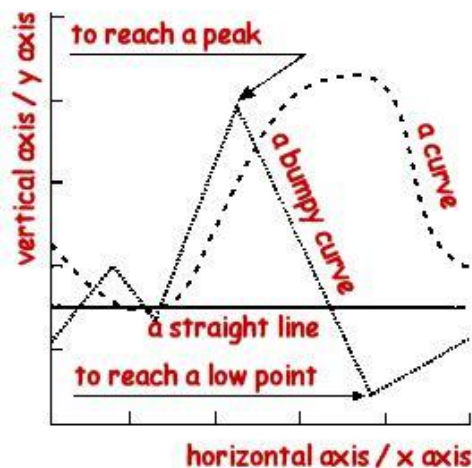
Matching the graphs



1. The investment level rose suddenly.
2. The sales of our products fell slightly in the final quarter.
3. The Research and Development budget has stabilized over the past few years.
4. At the end of the first year, sales stood at 50 per cent of the present level.
5. The price reached a peak before falling a little and then maintaining the same level.
6. There has been a steady increase in costs over several years.
7. The sudden collapse in share prices has surprised everyone.
8. The value of the shares has shown a steady decline.

Presenting a graph

Introduction	Topic	Circumstances
This graph shows ...	the results of our products ...	over 10 years.
The diagram outlines ...	rates of economic growth ...	between 1990 and 1996.
This table lists ...	the top ten agencies ...	in the industrial world.
This pie chart represents	the company's turnover ...	for this year in our sector.
This line chart depicts ...	the changes in sales ...	over the past year.
This chart breaks down (<i>ventile</i>) ...	the sales of each salesman ...	during the past ten weeks.



Look at the graph and write the appropriate letters in front of each definition:

- | | |
|--|---------------------------------------|
| <input type="radio"/> : the horizontal axis (or the x axis) | <input type="radio"/> : a solid line |
| <input type="radio"/> : the vertical axis (or the y axis) | <input type="radio"/> : a broken line |
| <input type="radio"/> : the scale | <input type="radio"/> : a dotted line |